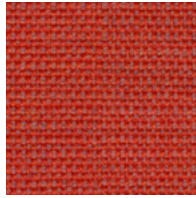


Wool Classics Card

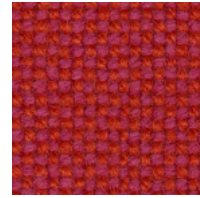


**STYLEX**

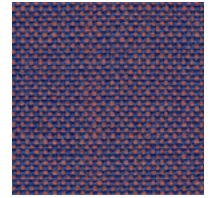
**kvadrat**



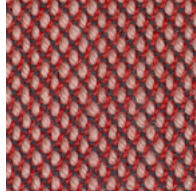
Canvas 2  
644



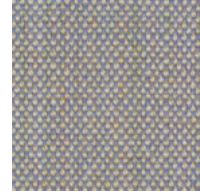
Hallingdal 65  
680



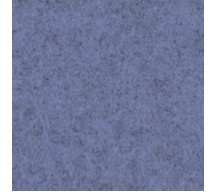
Remix 3  
686



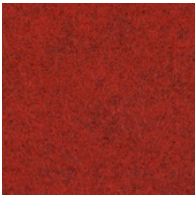
Steelcut Trio 3  
636



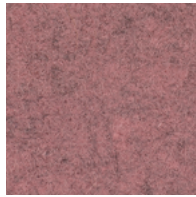
Remix 3  
606



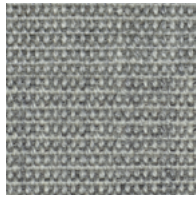
Divina Melange 3  
647



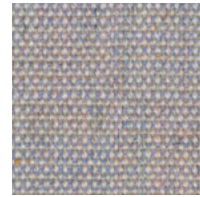
Divina Melange 3  
557



Divina Melange 3  
617



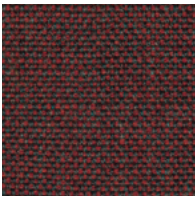
Canvas 2  
124



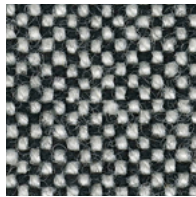
Canvas 2  
716



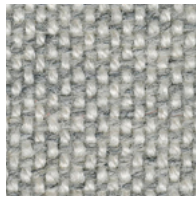
Divina Melange 3  
687



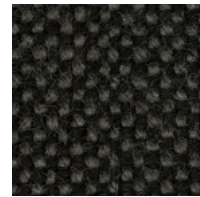
Remix 3  
662



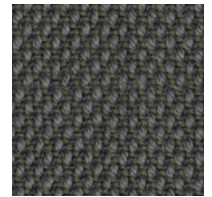
Hallingdal 65  
166



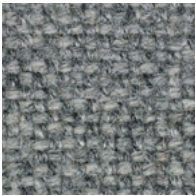
Hallingdal 65  
110



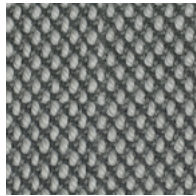
Hallingdal 65  
173



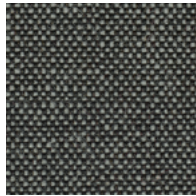
Steelcut Trio 3  
176



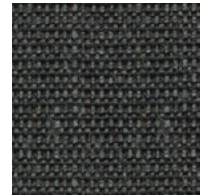
Hallingdal 65  
130



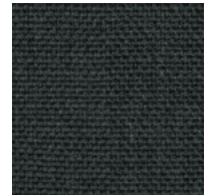
Steelcut Trio 3  
133



Remix 3  
152



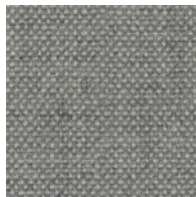
Canvas 2  
174



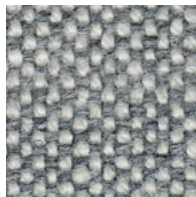
Remix 3  
173



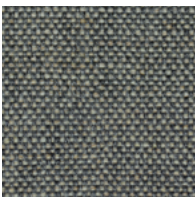
Divina Melange 3  
147



Remix 3  
123



Hallingdal 65  
116



Remix 3  
133

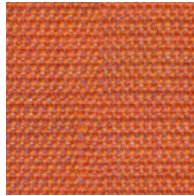


Remix 3  
143

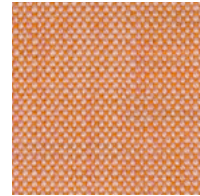


Divina Melange 3  
120

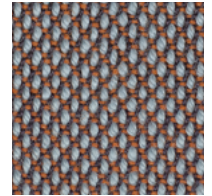




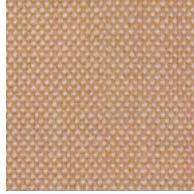
Canvas 2  
546



Remix 3  
516



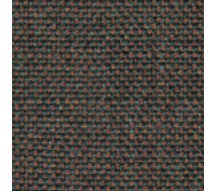
Steelcut Trio 3  
416



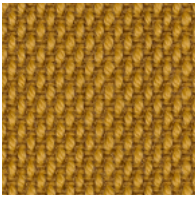
Remix 3  
406



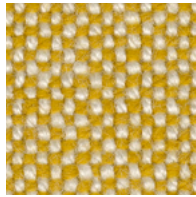
Divina Melange 3  
547



Remix 3  
672



Steelcut Trio 3  
453



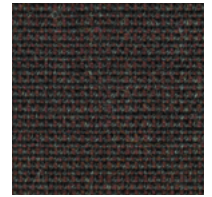
Hallingdal 65  
407



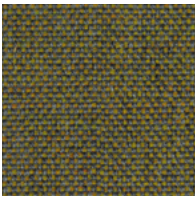
Steelcut Trio 3  
226



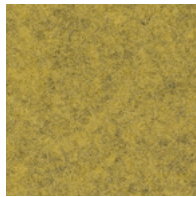
Divina Melange 3  
227



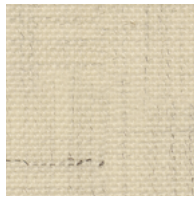
Canvas 2  
374



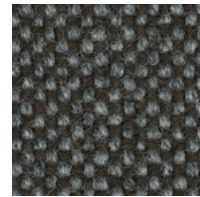
Remix 3  
962



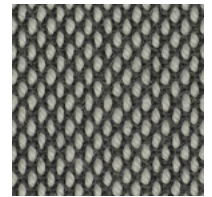
Divina Melange 3  
427



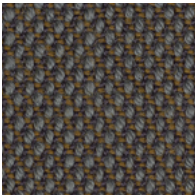
Remix 3  
113



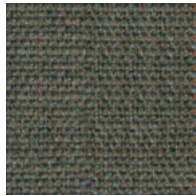
Hallingdal 65  
368



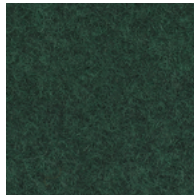
Steelcut Trio 3  
124



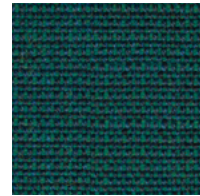
Steelcut Trio 3  
376



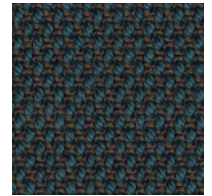
Canvas 2  
936



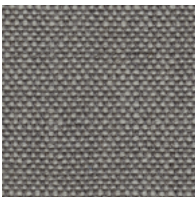
Divina Melange 3  
967



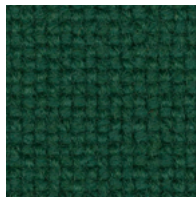
Canvas 2  
984



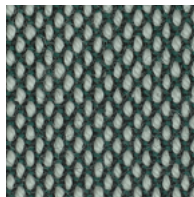
Steelcut Trio 3  
996



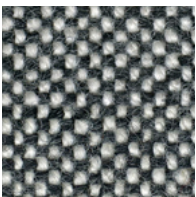
Remix 3  
136



Hallingdal 65  
944



Steelcut Trio 3  
916



Hallingdal 65  
126

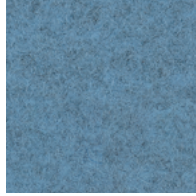


Divina Melange 3  
977

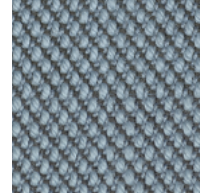


Divina Melange 3  
937

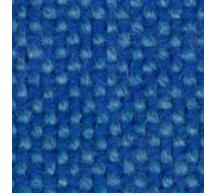




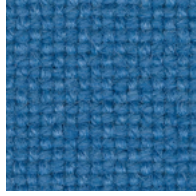
Divina Melange 3  
731



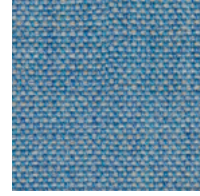
Steelcut Trio 3  
713



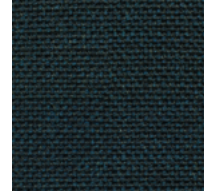
Hallingdal 65  
733



Hallingdal 65  
723



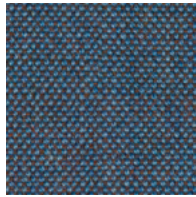
Remix 3  
816



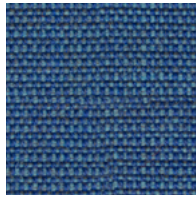
Remix 3  
873



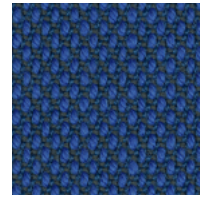
Steelcut Trio 3  
906



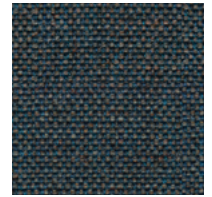
Remix 3  
743



Canvas 2  
746



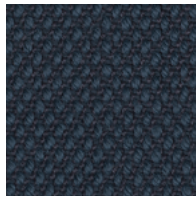
Steelcut Trio 3  
746



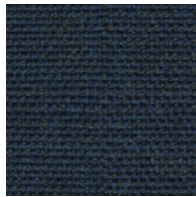
Remix 3  
753



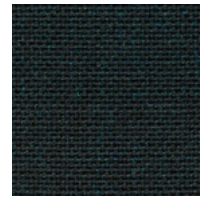
Canvas 2  
114



Steelcut Trio 3  
796



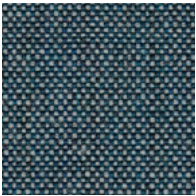
Canvas 2  
794



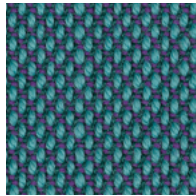
Remix 3  
996



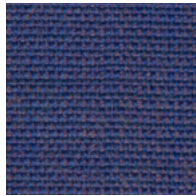
Canvas 2  
786



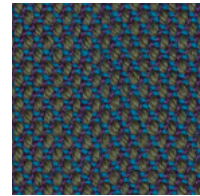
Remix 3  
716



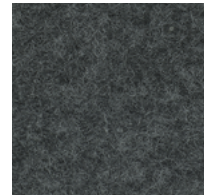
Steelcut Trio 3  
983



Canvas 2  
666



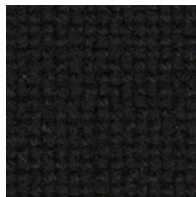
Steelcut Trio 3  
883



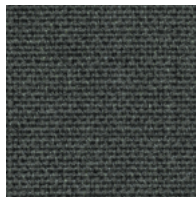
Divina Melange 3  
170



Divina Melange 3  
180



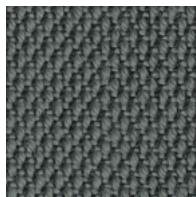
Hallingdal 65  
190



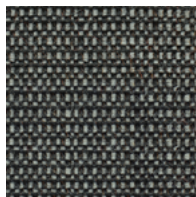
Remix 3  
163



Steelcut Trio 3  
195



Steelcut Trio 3  
153



Canvas 2  
154



**Divina Melange 3**

Designed by Finn Skodt

**Application** Offices, hotels, institutions, domestic use.

**Description** 100% new wool. Width app. 59 inches (150 cm). Weight app. 26.9 oz/ly (840 g/lin.m). Piece dyed. Colour differences may occur.

**Selvedge/Direction** ↔

**Abrasion:** App. 4!:>,000 rubs acc. to the Martindale method EN ISO 12947.

**Lightfastness** (ISO) 5-7. **Pilling** (EN ISO) 3.

**Fastness to rubbing** (ISO) dry 4-5, wet 4.

**Sound absorption** (EN ISO 354) 0.60/Class C (flat), 0.70/Class C (waved).

**Airflow** 678 Pa s/m.

**Flame resistance:** AS/NZS 1530.3. BS 5852 Crib 5. BS 5852 Part 1. BS 5867 Part 2 Type B. EN 1021-1/2. EN 13501, C-s1, d0 adhered. GB 50222 B1 with treatment. IMO FI P Code 2010:Part 8. NF D 60 013. NFPA 260. SN 198 898 5.3 with treatment. UNI 9175 11M. US Cal. Bull. 117-2013. ONO RM B1 / Q1. (Copy of test report available).

**Care** Please see the ISO symbols. Iron without steam. Disinfection, see www.kvadrat.dk.

**Canvas 2**

Designed by Giulio Ridolfo

**Application** Offices, hotels, institutions, domestic use. Great durability.

**Description** 90% new wool, worsted, 10% nylon. Width app. 55 inches (140 cm). Weight app. 480 g/lin.m, 15.4 oz/ly. Material dyed. Colour differences may occur.

**Selvedge/Direction** ↔

**Abrasion:** App. 100,000 rubs acc. to the Martindale method EN ISO 12947\*.

**Lightfastness** (ISO) 5-6. **Pilling** (EN ISO) 4.

**Fastness to rubbing** (ISO) dry 4-5, wet 4-5.

**Sound absorption** (EN ISO 354) 0.60/Class C (flat), 0.80/Class B (waved).

**Airflow** 849 Pa s/m.

**Flame resistance:** AS/NZS 1530.3. BS 5852 Crib 5 with treatment. BS 5852 ignition source 3. BS 5852 Part 1. EN 1021-1/2. GB 50222 B1 with treatment. IMO FTP Code 2010:Part 8. NF D 60 013. NFPA 260. SN 198 898 5.3 with treatment. UNI 9175 11M. US Cal. Bull. 117-2013. ONORM B1 / 01. (Copy of test report available).

**Care** Please see the ISO symbols. Disinfection, see kvadrat.dk.

**Hallingdal 65**

Designed by Nanna Ditzel

**Application** Offices, hotels, institutions, domestic use. Great durability.

**Description** 70% new wool, 30% viscose. Width 51 inches (130 cm). Weight app. 25.5 oz/ly (795 g/lin.m). Material dyed. Foreign fibres may occur in light colours. Colour differences may occur.

**Selvedge/Direction** ↕

**Abrasion:** App. 100.000 rubs acc. to the Martindale method EN ISO 12947.

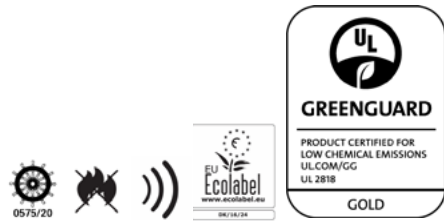
**Lightfastness** (ISO) 5-7. **Pilling** (EN ISO) 3-4.

**Fastness to rubbing** (ISO) dry 4-5, wet 3-5.

**Sound absorption** (EN ISO 354) 0.45/Class D (flat), 0.70/Class C (waved). **Airflow** 182 Pa s/m.

**Flame resistance:** AS/NZS 1530.3. AS/NZS 3837 Class 2. BS 5852 Crib 5. BS 5852 part 1. EN 1021-1/2. GB 50222 B1 with treatment. IMO FTP Code 2010:Part 8. NF D 60 013. NFPA 260. SN 198 898 5.3 with treatment. UNI 9175 11M. US Cal. Bull. 117 2013. ONO RM B1 / Qt (Copy of test report available).

**Care** Please see the ISO symbols. Disinfection, see www.kvadrat.dk.



**Remix 3**

Designed by Giulio Ridolfo

**Application** Offices, hotels, institutions, domestic use. Great durability.

**Description** 90% new wool, worsted, 10% nylon. Width app. 55 inches (140 cm). Weight app. 13.5 oz/ly (420 g/lin.m). Material dyed. Colour differences may occur.

**Selvedge/Direction** ↔

**Abrasion:** App. 100,000 rubs acc. to the Martindale method EN ISO 12947.

**Lightfastness** (ISO) 5-7. **Pilling** (EN ISO) 4.

**Fastness to rubbing** (ISO) dry 4-5, wet 4.

**Sound absorption** (EN ISO 354) 0.55/Class D (flat), 0.80/Class B (waved).

**Airflow** 465 Pa s/m. **Flame resistance:** AS/NZS 1530.3. AS/NZS 3837 Class 2. BS 5852 Crib 5 with treatment. BS 5852 ignition source 3. BS 5852 part 1. EN 1021-1/2. GB 50222 B1 with treatment. IMO FI P Code 2010:Part 7 with treatment. IMO FTP Code 2010:Part 8. NF D 60 013. NFPA 260. SN 198 898 5.3 with treatment. UNI 9175 11M. US Cal. Bull. 117-2013. ONORM B1 / Q1. (Copy of test report available).

**Care** Please see the ISO symbols. Disinfection, see www.kvadrat.dk.

**Steelcut Trio 3**

Designed by Frans Dijkmeijer and Giulio Ridolfo

**Application** Offices, hotels, institutions, domestic use. Great durability.

**Description** 90% new wool, worsted, 10% nylon. Width app. 55 inches (140 cm). Weight app. 24.8 oz/ly (770 g/lin.m). Yarn dyed. Colour differences may occur.

**Selvedge/Direction** ↕

**Abrasion:** App. 100,000 rubs acc. to the Martindale method EN ISO 12947.

**Lightfastness** (ISO) 5-7. **Pilling** (EN ISO) 4.

**Fastness to rubbing** (ISO) dry 4-5, wet 3-5.

**Sound absorption** (EN ISO 354) 0.70/Class C (flat), 0.95/Class A (waved). **Airflow** 910 Pa s/m.

**Flame resistance:** AS/NZS 1530.3. AS/NZS 3837 Class 2. BS 5852 Crib 5 with treatment. BS 5852 ignition source 3. BS 5852 part 1. EN 1021-1/2. GB 50222 B1 with treatment. IMO FTP Code 2010:Part 8. NF D 60 013. NFPA 260. SN 198 898 5.3 with treatment. UNI 9175 11M. US Cal. Bull. 117-2013. ONO RM B1 / Q1. (Copy of test report available).

**Care** Please see the ISO symbols. Disinfection, see www.kvadrat.dk.



Quality and environmental system accreditation according to ISO 9001 and ISO 14001.

\*ACT Registered Certification Marks

Encouraging the use of sustainable fibres. Durable and high quality.

Hazardous substances restricted. Contact and further information [www.kvadrat.dk](http://www.kvadrat.dk)



US contact info: 1-800-620-9309