

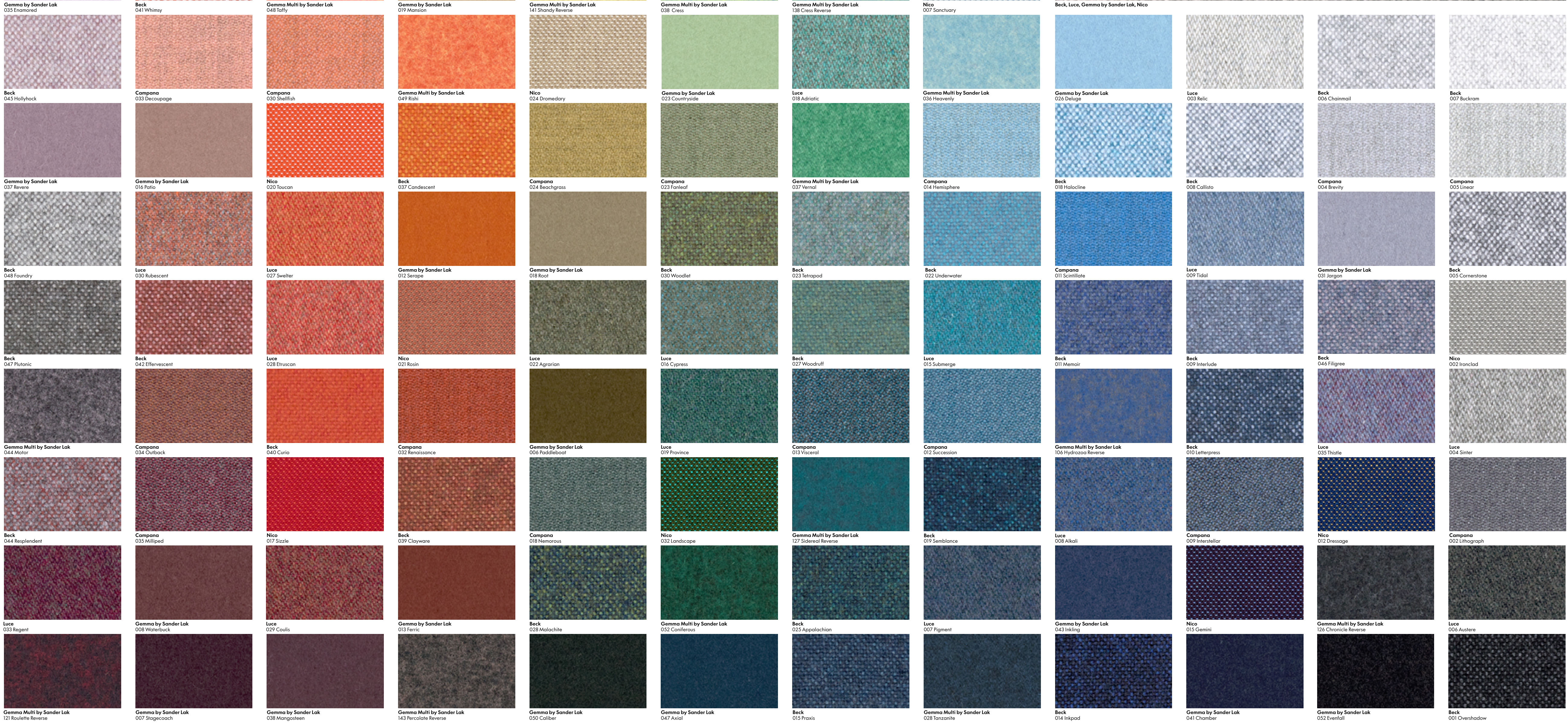
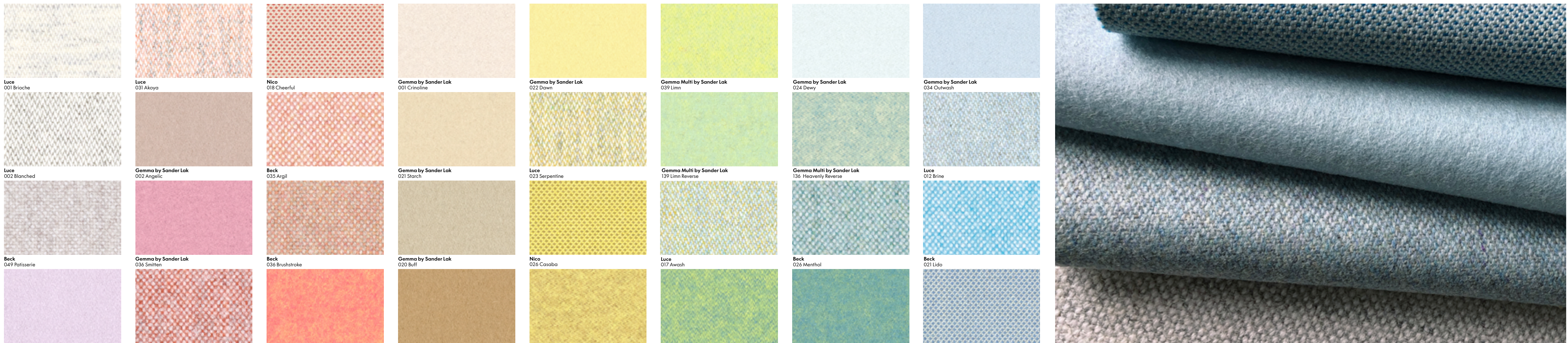
Wool Series

stylex maharam

Building upon Maharam's material expertise and interest in bringing a fresh perspective to classic textiles, our wool initiative highlights the environmental, aesthetic, and performance benefits of the natural fiber through extraordinary breadth of color and texture. The series celebrates the tactility and nuance of wool with textures ranging from the lightly pressed hand of Beck and Campana to the subtle dimension of Nico and Luce. Two felted wools in collaboration with renowned fashion designer Sander Lak—Gemma and its reversible mélange companion Gemma Multi—explore Lak's acute sense of color with an exceedingly soft hand.

Embracing wool's natural performance attributes and reduced environmental impact as a rapidly renewable material, Maharam wools avoid added chemical finishes and incorporate recycled and post-consumer recycled content wherever possible.

- 6 styles: Beck, Campana, Gemma by Sander Lak, Gemma Multi by Sander Lak, Luce, Nico
- 128 featured colors
- Visit maharam.com to view all 318 colors
- Meets all flammability requirements for contract use
- Meets ACT performance guidelines for heavy-duty upholstery
- Supported by Maharam's ISO 14001 certification of over twenty years



Wool Series

stylex maharam

Beck
Campana
Gemma by Sander Lak
Gemma Multi by Sander Lak
Luce
Nico

Beck
Content: 78% Wool, 22% Nylon
Finish, Backing: None, None
Width: 54"

Campana
Content: 85% Wool, 15% Nylon
Finish, Backing: None, None
Width: 59"
Note: Reversible.

Gemma by Sander Lak
Content: 85% Wool, 15% Nylon
Finish, Backing: None, None
Width: 56"

Gemma Multi by Sander Lak
Content: 85% Wool, 15% Nylon
Finish, Backing: None, None
Width: 56"
Note: Reversible.

Luce
Content: 75% Post-Consumer Recycled Wool,
20% Polyester, 5% Nylon
Finish, Backing: None, None
Width: 59"

Nico
Content: 63% Wool, 21% Polyester, 16% Nylon
Finish, Backing: None, None
Width: 54"

TYPICAL FOR ALL
Maintenance: S-Clean with mild, water-free
dry cleaning solvent.
Abrasion: 100,000 cycles Martindale.
Note: Abrasion test results exceeding ACT
Performance Guidelines are not an indicator
of product lifespan. Multiple factors affect
fabric durability and appearance retention.
Flammability: This textile meets all appropriate
flammability requirements for contract use.
Reduced environmental impact: These textiles
offer reduced environmental impact.
Find complete product information at
maharam.com.
Samples: Call 800.645.3943 or visit
maharam.com

© 2021 Maharam

Offer current as of September 2024

Complete specifications at maharam.com

STYLEX
740 Coopertown Road
Delanco, NJ 08075
856.461.5600
www.stylexdesign.com