



# Luna Textiles Collection

A quick guide to pre-approved and pre-tested Luna Textiles ready for use on a variety of Stylex offerings.

L U N A

[lunatextiles.com](http://lunatextiles.com) | [@lunatextiles](https://www.instagram.com/lunatextiles)

# stylex

## About Luna Textiles

**Passion defines us as a textile studio; it drives us to create inspirational textiles for the built environment. Committed to excellence, we design with purpose and we focus our expertise on bringing unique textiles to life.**

Luna textiles was founded in San Francisco in 1994. Beginning from a passionate spark for design, Luna strives to bring new style to commercial interiors. Our textiles are designed for the commercial, hospitality, healthcare, education, and residential markets.

We offer a complete range of textiles for use in upholstery, panel, drapery, and wall covering applications. With a concern for the well-being of those who inhabit or interact with our products, we select intentional materials with content that ranges from wool and cotton to recycled polyester and nylon. Environmental sustainability is a priority for Luna. Our high-quality

products are often times made from natural, recycled, or rapidly renewable fibers.

The creativity and ingenuity that shaped Luna's beginnings, continue today. As our company grows, we continue to seek out passion for creating aesthetically timeless textiles and provide a thoughtfully curated collection we hope provides practical and inspiring products.





# Blueprint

---

## Colorways

13 colorways

## Application

Upholstery

## Composition

44% Nylon, 26% Rayon, 18% Polyester,  
12% Linen

## Abrasion

100,000 double rubs (Wyzenbeek)

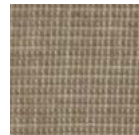
## Flammability

California Technical Bulletin 117

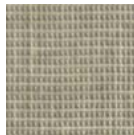
## Notes

Bleach cleanable

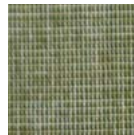
**Click here** to see the full specification  
information and to order samples



Trace  
UPR793



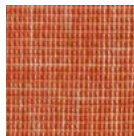
Draft  
UPR794



Hillside  
UPR795



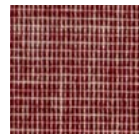
Herschel  
UPR796



Sunset  
UPR797



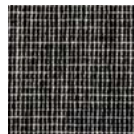
Woods  
UPR798



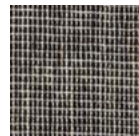
Shulman  
UPR799



Eventide  
UPR800



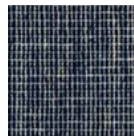
No. 22  
UPR801



Pierre  
UPR802



Julius  
UPR803



Stahl  
UPR804



Carlotta  
UPR805





# Bungalow

---

**Colorways**

9 colorways

**Application**

Upholstery

**Composition**

40% Acrylic, 28% Cotton, 14% Polyester,  
9% Linen, 9% Viscose

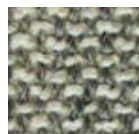
**Abrasion**

50,000 double rubs (Wyzenbeek)

**Flammability**

California Technical Bulletin 117

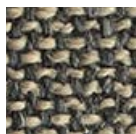
**Click here** to see the full specification  
information and to order samples



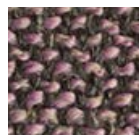
Elephant  
UGO641



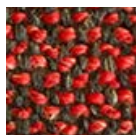
Piano  
UGO642



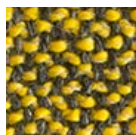
Viking  
UGO643



Pastille  
UGO644



Volcano  
UGO645



Bumble  
UGO646



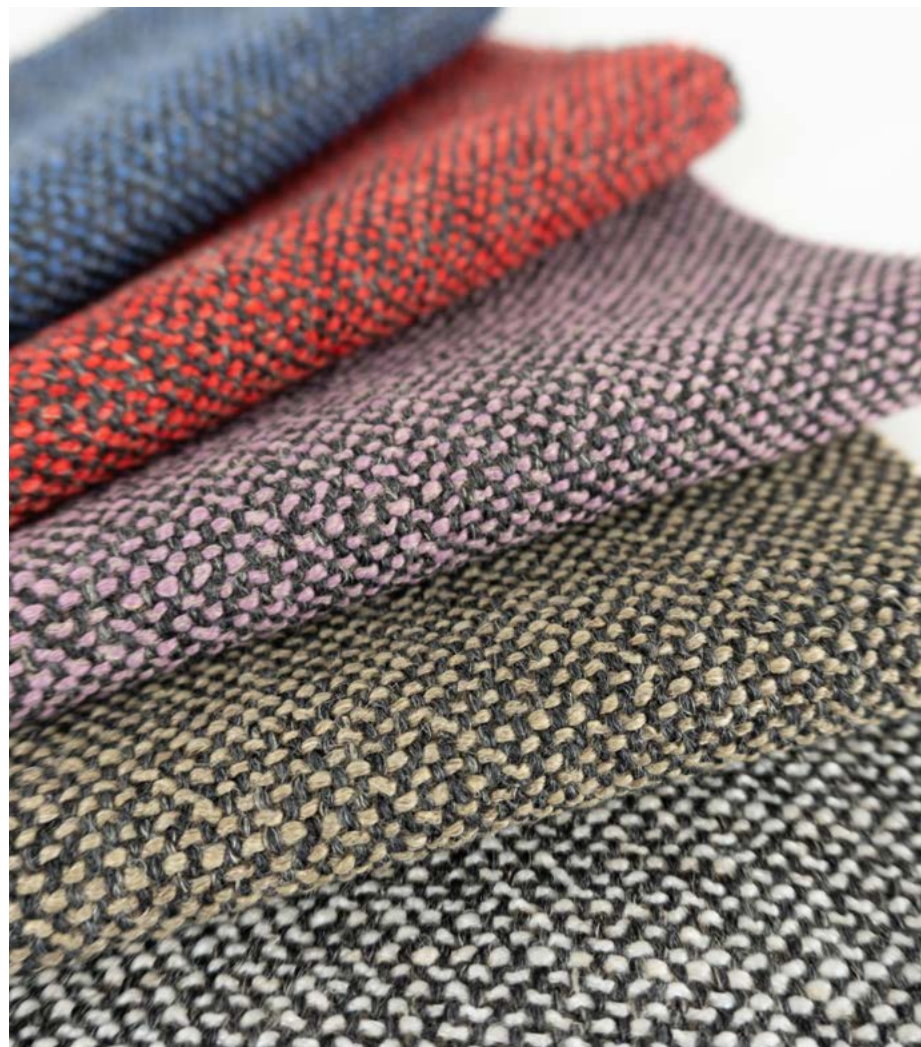
Jive  
UGO647



Snorkel  
UGO648



Fjord  
UGO649



# Dash

---

**Colorways**

8 colorways

**Application**

Upholstery

**Composition**

20% Cotton, 35% Wool, 43% Polyester,  
2% Nylon

**Abrasion**

80,000 double rubs (Wyzenbeek)

**Flammability**

California Technical Bulletin 117

**Click [here](#)** to see the full specification  
information and to order samples



Dash  
UDS001



Klein  
UDS002



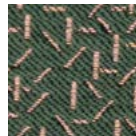
Franco  
UDS003



Yohji  
UDS004



Grace  
UDS005



Issey  
UDS006



Bianca  
UDS007



Catwalk  
UDS008





# Demi

---

## Colorways

12 colorways

## Application

Upholstery, Panel, Drapery

## Composition

72% Post-Consumer Recycled Polyester,  
30% Polyester

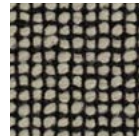
## Abrasion

100,000 double rubs (Wyzenbeek)

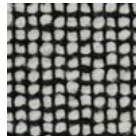
## Flammability

California Technical Bulletin 117  
ASTM E84 Class 1 (Unadhered), NFPA 701

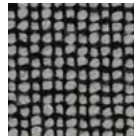
**Click here** to see the full specification  
information and to order samples



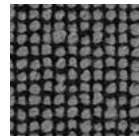
Pearl  
UDE001



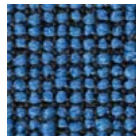
Note  
UDE002



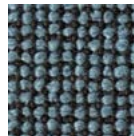
Marl  
UDE003



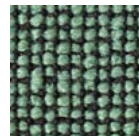
Fleck  
UDE004



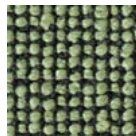
Lapis  
UDE005



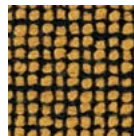
Caspian  
UDE006



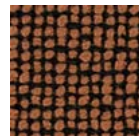
Inverness  
UDE007



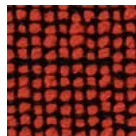
Croft  
UDE008



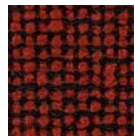
Curlicue  
UDE009



Pinto  
UDE010



Bauble  
UDE011



Redwood  
UDE012





# Lana

---

## Colorways

10 colorways

## Application

Upholstery

## Composition

30% Wool, 30% Polyester, 25% Acrylic,  
13% Cotton, 2% Nylon

## Abrasion

60,000 double rubs (Wyzenbeek)

## Flammability

California Technical Bulletin 117

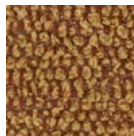
**Click here** to see the full specification  
information and to order samples



Form  
ULA001



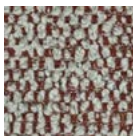
Engage  
ULA002



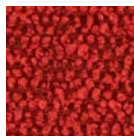
Link  
ULA003



Embody  
ULA004



Bridge  
ULA005



Signal  
ULA006



Logic  
ULA007



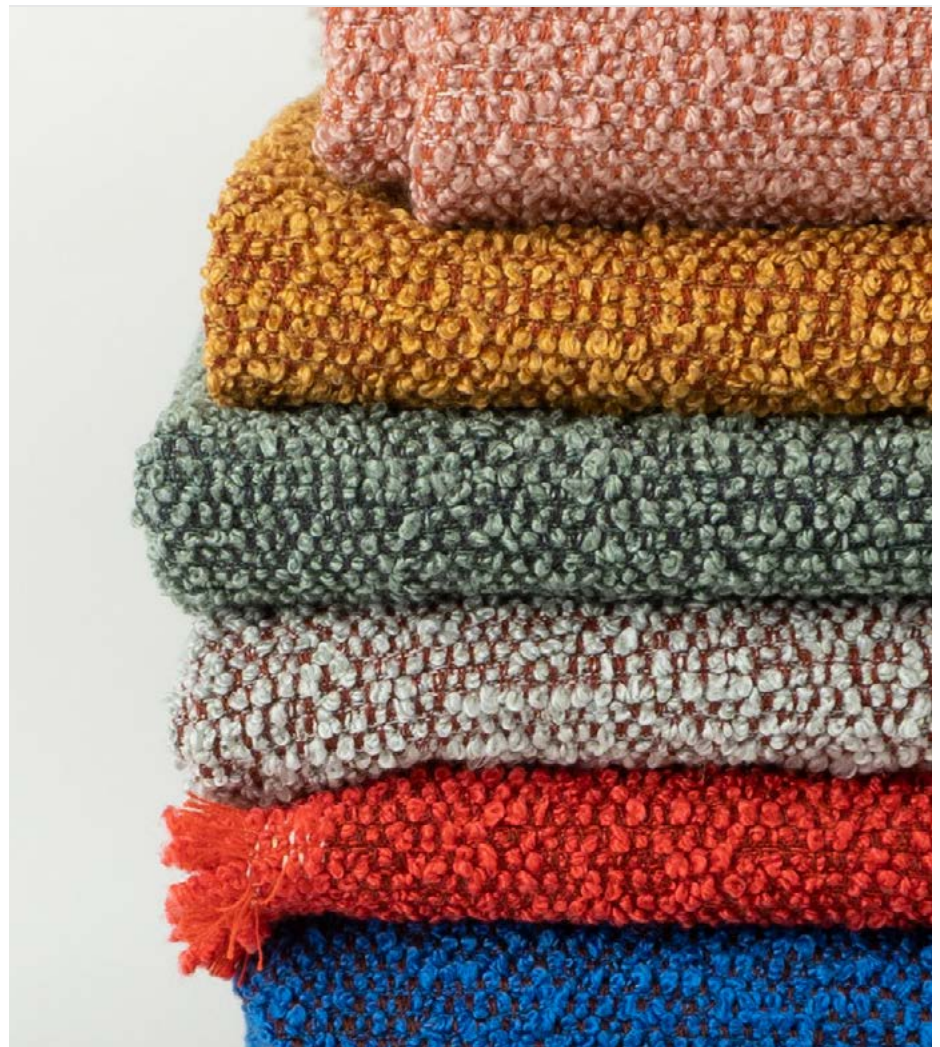
Merge  
ULA008



Static  
ULA009



Public  
ULA010



# Layer

---

## Colorways

18 colorways

## Application

Upholstery

## Composition

100% SiO<sup>TM</sup> Silicone;

Backing: 100% Polyester

## Abrasion

225,000+ double rubs (Wyzenbeek)

## Flammability

California Technical Bulletin 117

NFPA 260

**Click here** to see the full specification information and to order samples





# Linen

---

## Colorways

11 colorways

## Application

Upholstery

## Composition

45% Linen, 28% Nylon, 16% Viscose,  
11% Polyester

## Abrasion

100,000 double rubs (Wyzenbeek)

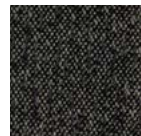
## Flammability

California Technical Bulletin 117  
NFPA 260

## Notes

Bleach cleanable

**Click here** to see the full specification  
information and to order samples



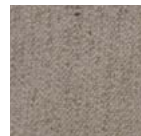
Checkerboard  
UEN551



Morel  
UEN552



Puppy  
UEN553



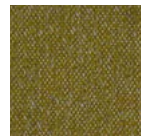
Whey  
UEN554



Doe  
UEN555



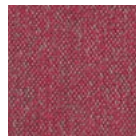
Lullaby  
UEN556



Sage  
UEN557



Apricot  
UEN558



Runway  
UEN559



Mulberry  
UEN560



Mascot  
UEN561



# Notion

---

## Colorways

13 colorways

## Application

Upholstery, Panel

## Composition

72% Polyester, 28% Post-Industrial  
Recycled Polyester

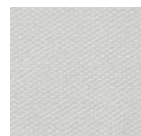
## Abrasion

100,000 double rubs (Wyzenbeek)

## Flammability

California Technical Bulletin 117  
ASTM E84 Class 1 (Unadhered), NFPA 260

**Click here** to see the full specification  
information and to order samples



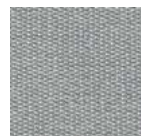
Whisper  
UOT361



Quinoa  
UOT362



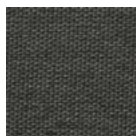
Emu  
UOT363



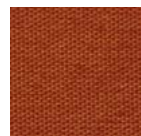
Shoal  
UOT364



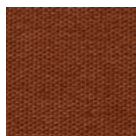
Sabre  
UOT365



Maelstrom  
UOT366



Goldfish  
UOT367



Squash  
UOT368



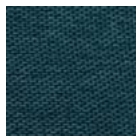
Mustard  
UOT369



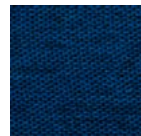
Laurel  
UOT370



Bottlenose  
UOT371



Flood  
UOT372



Hummingbird  
UOT373





# Raya

---

## Colorways

9 colorways

## Application

Upholstery, Panel

## Composition

100% Polyester, (28% Post-Consumer Recycled, 15.5% Recycled Ocean Waste Polyester)

## Abrasion

100,000 double rubs (Wyzenbeek)

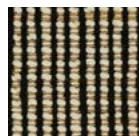
## Flammability

California Technical Bulletin 117

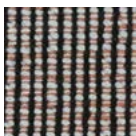
## Notes

Bleach cleanable

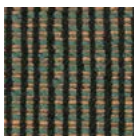
**Click here** to see the full specification information and to order samples



Calabaza  
URY301



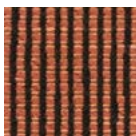
Telar  
URY302



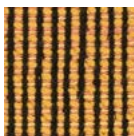
Cacti  
URY303



Talavera  
URY304



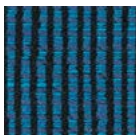
RedClay  
URY305



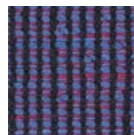
Sol  
URY306



Yucca  
URY307



Lago  
UOT308



Bazaar  
URY309



# Three-D

---

## Colorways

8 colorways

## Application

Upholstery

## Composition

40% Acrylic, 28% Cotton, 14% Polyester,  
9% Linen, 9% Viscose

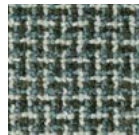
## Abrasion

50,000 double rubs (Wyzenbeek)

## Flammability

California Technical Bulletin 117

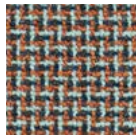
**Click here** to see the full specification  
information and to order samples



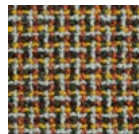
Myrtle  
UDD001



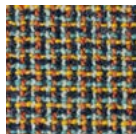
Juxtapose  
UDD002



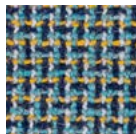
Cubic  
UDD003



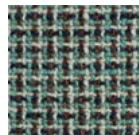
Kitchen Sink  
UDD004



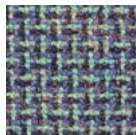
Telly  
UDD005



Hockney  
UDD006



Parallax  
UDD007



Submerge  
UDD008





# Woohl

---

## Colorways

14 colorways

## Application

Upholstery, Panel

## Composition

60% Post-Consumer Recycled Polyester,  
40% Polyester

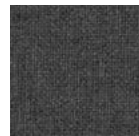
## Abrasion

100,000 double rubs (Wyzenbeek)

## Flammability

California Technical Bulletin 117  
ASTM E84 Class 1 (Unadhered)

**Click here** to see the full specification  
information and to order samples



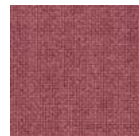
Evening  
UHL571



Matrix  
UHL572



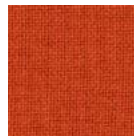
Fog  
UHL573



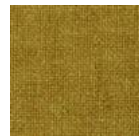
Camellia  
UHL574



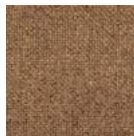
Darling  
UHL575



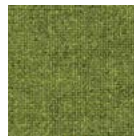
Sassy  
UHL576



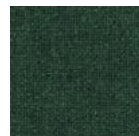
Beeswax  
UHL577



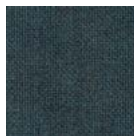
Camel  
UHL578



Marsh  
UHL579



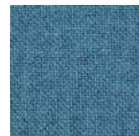
Drake  
UHL580



Submarine  
UHL581



Eddy  
UHL582



Lagoon  
UHL583



Anchor  
UHL584





**stylex**

L U N A

[lunatextiles.com](https://lunatextiles.com) | [@lunatextiles](https://www.instagram.com/lunatextiles)