

# The SEAQUAL Collection

**camira**  
[www.camirafabrics.com](http://www.camirafabrics.com)



**stylex**



# Waste made wonderful

Two textiles, one cause.

Together, Oceanic and Quest form the SEAQUAL Collection — created in partnership with the SEAQUAL INITIATIVE to combat marine plastic pollution and achieve a waste free environment.

Woven entirely from post-consumer recycled plastic — from debris floating discarded in our seas, used to make SEAQUAL YARN®, to bottles thrown away and destined for landfill — Oceanic and Quest are polyesters with a purpose.

United in aim, distinct in identity, these two textiles are unique in their aesthetic — created to work in harmony, or feature in splendid isolation. With a combined color palette which encompasses bold brights, muted modern tones and perfect pastels, there is a shade and style for every interior within the SEAQUAL Collection of textiles.

Contributing to reducing marine plastic pollution in a tangible way, each yard of Oceanic contains the equivalent of 26 bottles, whilst each yard of Quest contains the equivalent of 23 plastic bottles. To further assist in the fight against plastic waste, Camira makes a give-back donation directly to the SEAQUAL INITIATIVE for every yard sold to support their work in cleaning our oceans.

## Oceanic

A multi-tonal, chunky upholstery fabric which combines and contrasts a light warp with a deeply saturated weft, Oceanic has a striking diagonal twill which enhances both the considered color and careful construction of the fabric. Tough enough for a life not only on the seas but also on the seats it furnishes, Oceanic blends a soft fluidity with a high level of durability.

## Quest

With a lightly textured surface, and a balanced hopsack weave enhanced by discat-dyed SEAQUAL YARN®, Quest is beautifully simple in its aesthetic, and colored to create a delicate two-tone weave detail. Bringing a touch of the ocean's natural beauty to commercial interiors, this lightweight fabric is perfect for both task & soft seating, and ideal for use on panels.



# camira

## Oceanic

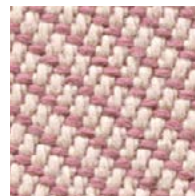
### Description

Oceanic is a fabric born of the SEAQUAL Initiative designed to combat marine plastic pollution and achieve a waste free environment. It is created entirely from post-consumer recycled plastic - from debris floating discarded in our seas, used to make SEAQUAL® YARN, bottles thrown away and destined for landfill. One small drop in the mission to clean both the earth and its ocean, this contemporary fabric is a recycled polyester with a purpose.

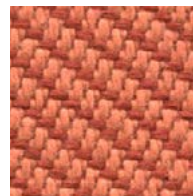
## SEAQUAL

### Technical Information

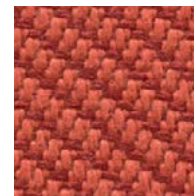
<b>Composition</b>	100% Post-consumer recycled polyester, including 50% SEAQUAL® YARN
<b>Environment</b>	Certified to OEKO_TEX® standard 100 Certified to Indoor Advantage Gold
<b>Width</b>	54 inches minimum
<b>Weight</b>	14 <sup>3/4</sup> oz/sq yd ±5%
<b>Abrasion</b>	Independently certified to ≥100,000 double rubs
<b>Flammability</b>	California Technical Bulletin 117 - 2013 BS 7176 Low Hazard BS 7176 Medium Hazard with EnviroFlam5 ASTM E84 Class 1 or A (Un-adhered)



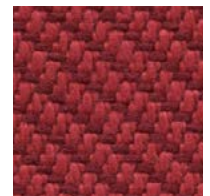
Seafarer OOC16



Coral OOC05



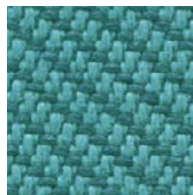
Aquatic OOC12



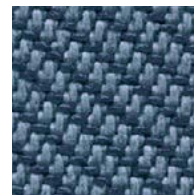
Abyss OOC10



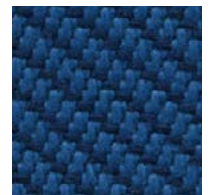
Gulf OOC15



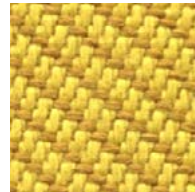
Jetsam OOC02



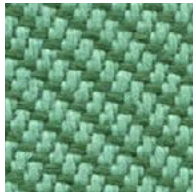
Neptune OOC11



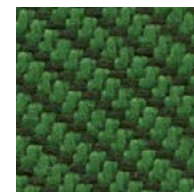
Atoll OOC06



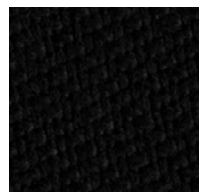
Barrier OOC07



Sea OOC04



Coast OOC03



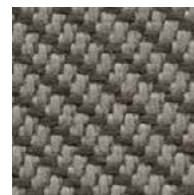
Flotsam OOC01



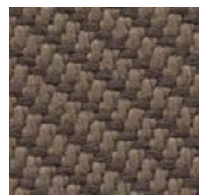
Paddle OOC13



Riptide OOC14



Bay OOC08



Shore OOC09

[Click here](#) to view full color palette and order memo samples

# camira

## Quest

### Description

Created with a conscience, Quest is a continuation of our partnership with the SEAQUAL INITIATIVE to combat marine plastic pollution. Waste made wonderful, this lightly textured fabric is woven entirely from post-consumer recycled plastic - transforming it into a fabric as fluid as the waves by which it was inspired, and which it seeks to save. With a hopsack weave enhanced by discat-dyed SEAQUAL® YARN, Quest brings a touch of ocean warmth to interiors.

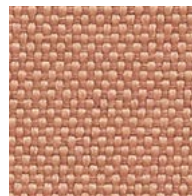
## SEAQUAL

### Technical Information

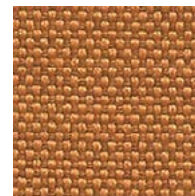
<b>Composition</b>	100% Post-consumer recycled polyester, including 75% SEAQUAL® YARN
<b>Environment</b>	Certified to OEKO_TEX® standard 100 Certified to Indoor Advantage Gold
<b>Width</b>	54 inches minimum
<b>Weight</b>	9 <sup>3</sup> / <sub>4</sub> oz/sq yd ±5%
<b>Abrasion</b>	Independently certified to ≥100,000 double rubs
<b>Flammability</b>	California Technical Bulletin 117 - 2013 NFPA 260 + UFAC Class 1, BS 7176 Low Hazard ASTM E84 Class 1 or A (Adhered) ASTM E84 Class 1 or A (Un-adhered)



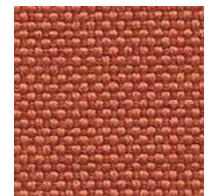
Sandstone QUE20



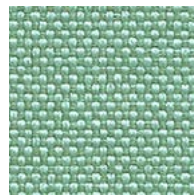
Shrimp QUE26



Clay QUE25



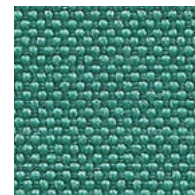
Crab QUE24



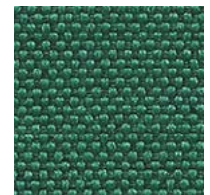
Urchin QUE17



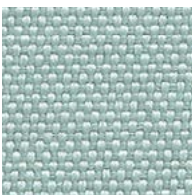
Sea Grass QUE13



Sea Foam QUE16



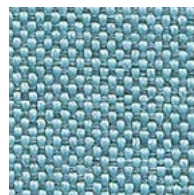
Kelp QUE15



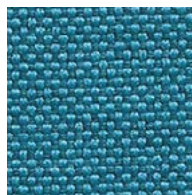
Ripple QUE07



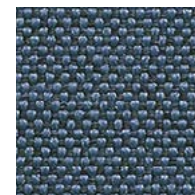
Shell QUE06



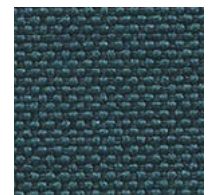
Tide QUE12



Wave QUE11



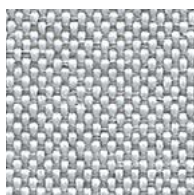
Limpet QUE09



Whelk QUE08



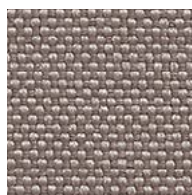
Salt QUE22



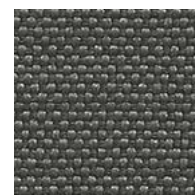
Barnacle QUE03



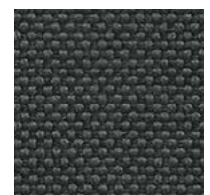
Driftwood QUE19



Pebble QUE27



Quartz QUE05



Mussel QUE04

[Click here](#) to view full color palette and order memo samples