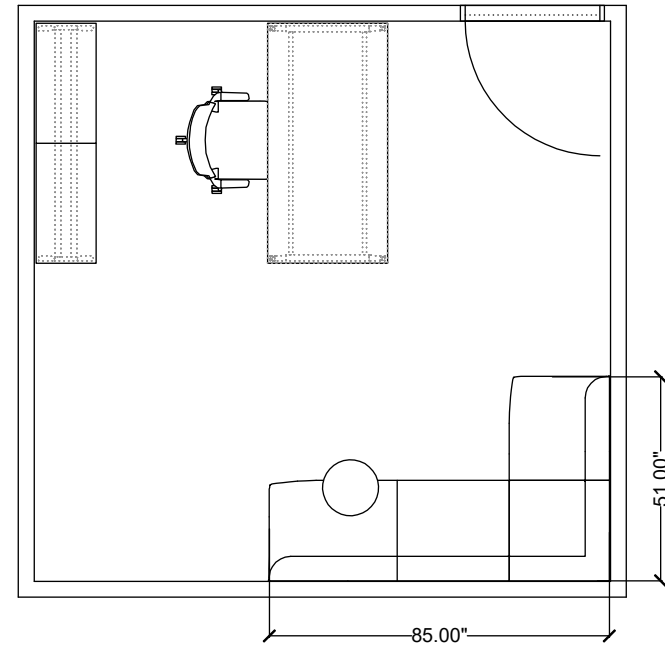


# stylex

## LUNA 11



Materials priced in Grade B Fabric. This specification is for budget purposes and reflects list pricing.



## LUNA 11

LINE	PART NUMBER	PART DESCRIPTION	QTY	LIST	EXT. LIST
1	F262	F4 Standard Height, Med Back, Mesh Back, Uph Seat, Arm	1	\$1,407.00	\$1,407.00
2	FA5D3060	Free Address Table - Desk Height 30 x 60	1	\$2,302.00	\$2,302.00
3	FA6L2H29	Free Address Locker - Double, 29" Height	1	\$2,494.00	\$2,494.00
4	FA6L2H29	Free Address Locker - Double, 29" Height	1	\$2,494.00	\$2,494.00
5	FA8SD15L60	Free Address Frame - Seat Height, 15" Depth 60" Length	1	\$999.00	\$999.00
6	LN75	Luna, Tablet Arm, Under, Single	1	\$800.00	\$800.00
7	LNE31L60	Luna, Elevated, Armless Left End, Low Back, 60in Long, Standard Uph	1	\$3,780.00	\$3,780.00
8	LNE42L25	Luna, Elevated, Square Inside Corner, Low Back, Standard Uph	1	\$2,459.00	\$2,459.00
9	LNE32L26	Luna, Elevated, Armless Right End, Low Back, 26in Long, Standard Uph	1	\$2,382.00	\$2,382.00
				<b>Quote Total:</b>	<b>\$19,117.00</b>